

Course
&
Test Series

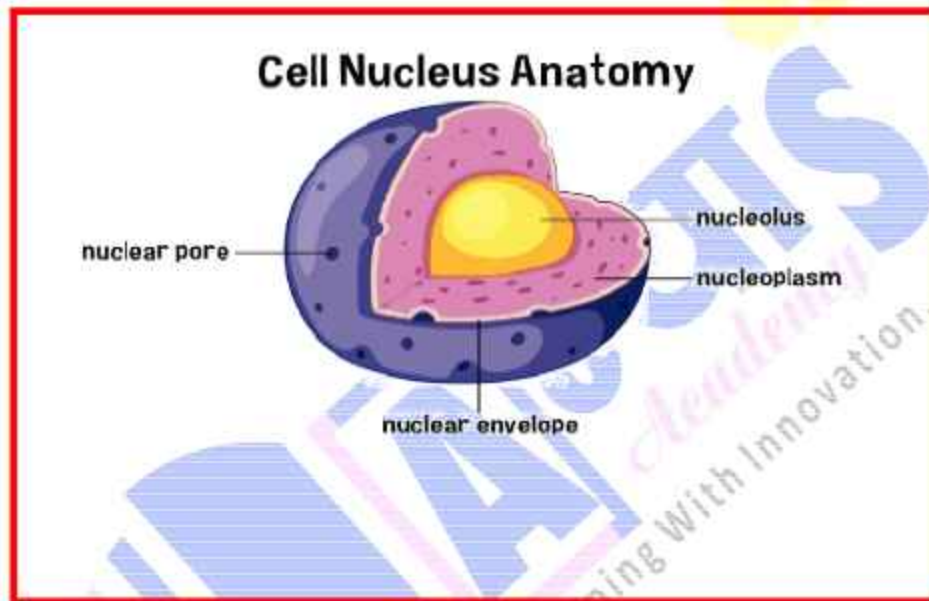
Self-Made Assignment - MS Word

Positioning, Grouping and Arranging Pictures in MS Word

Make this poster and save file with the name "Cell Structure."

Nucleus:

The nucleus is the control center of the cell. It contains the cell's genetic material(DNA) and is responsible for regulating all the cell's activities, including growth, metabolism, and reproduction. The nucleus is surrounded by a double membrane called the nuclear envelope and has tiny pores to allow material exchange between the nucleus and the cytoplasm.



Instructions:-

- Add Picture from Internet.
- Position In Top Center Square Text Wrapping.
- Add Picture Border 3pt "Red" Color.

Banking & Insurance

Central Govt. Service

State Govt. Services

LAW Entrance

MBA Entrance

Railways & Metro Services

...many more

abhyasonline.in

**Course
&
Test Series**



CBSE



ICSE



NTSE



**Banking &
Insurance**



**Central Govt.
Service**



**State Govt.
Services**



**LAW
Entrance**



**MBA
Entrance**



**Railways & Metro
Services**

...many more

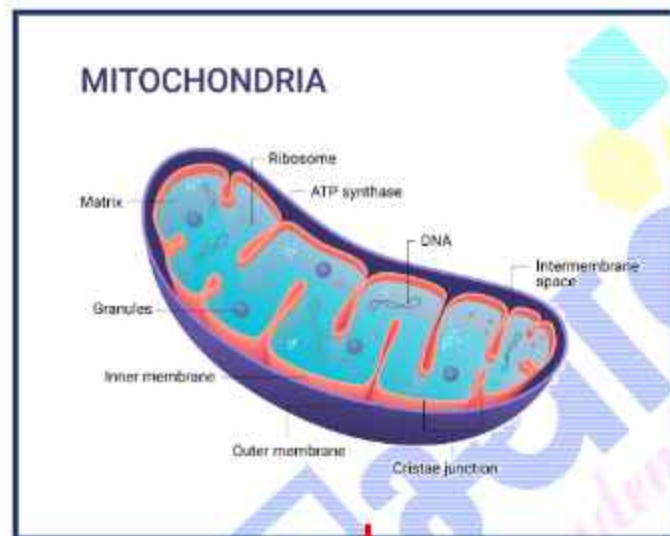
abhyasonline.in

Self-Made Assignment - MS Word

Positioning, Grouping and Arranging Pictures in MS Word

Mitochondria:

- Known as the "powerhouses" of the cell, mitochondria are responsible for generating energy in the form of ATP (adenosine triphosphate) through a process called cellular respiration. They have their own DNA and are capable of self-replication, which is a unique feature. Mitochondria are essential for providing the energy required for various cell functions.



Instructions:-

- Add Picture from Internet.
- Position In Top Right Square Text Wrapping.
- Add Picture Border with 2pt Blue color.

