

**Course
&
Test Series**

Adding Advanced Animations on a Slide in Power Point

Microsoft Power Point

Module 28 - Adding Advanced Animations on a Slide in PowerPoint

Definition:

Advanced animations in PowerPoint refer to customized and detailed motion effects that are applied to objects (like text, images, shapes) to enhance presentations, control sequence, and make content engaging. They go beyond basic appear/disappear effects and include timing, triggers, motion paths, and animation sequences.

Difference between Animation vs. Advanced Animation in PowerPoint

Aspect	Basic Animation	Advanced Animation
Definition	Simple movement or visual effect applied to an object.	Customized and controlled animation effects with advanced options.
Purpose	To make text, images, or shapes appear, move, or exit.	To create more precise, interactive, and dynamic presentations.
Examples	Fade, Fly In, Zoom, Bounce.	Motion Paths, Triggers, Delays, and complex animation sequences.
Control	Limited (just choose and apply).	Full control over timing, sequence, duration, and triggers.
Tools Used	Basic Animation menu.	Animation Pane, Triggers, Timing options, Custom Paths.
Use Case	Simple slides like title entrances or bullet list reveals.	Interactive quizzes, storytelling, simulations, or guided learning.

Example:

- Animation: You apply a "Fade In" to a title text – it simply fades in when the slide starts.
- Advanced Animation: You apply a "Fly In", make it start after 2 seconds, move along a custom path, and only play when you click a button on the slide.

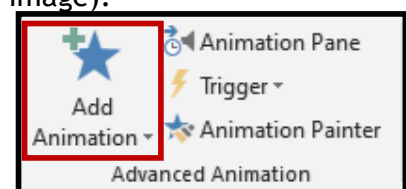
Summary:

- Animations = Basic visual effects.
- Advanced Animations = Animation + Timing + Sequence + Interaction.

Add Advanced Animation

To add advanced animation in PowerPoint:

1. Select the object you want to animate (like text or image).
2. Go to the "Animations" tab and pick an animation.
3. Click "Preview" to see how it looks!



 **CBSE**

 **ICSE**

 **NTSE**

 **Banking & Insurance**

 **Central Govt. Service**

 **State Govt. Services**

 **LAW Entrance**

 **MBA Entrance**

 **Railways & Metro Services**

...many more

abhyasonline.in

**Course
&
Test Series**

 **CBSE**

 **ICSE**

 **NTSE**

 **Banking &
Insurance**

 **Central Govt.
Service**

 **State Govt.
Services**

 **LAW
Entrance**

 **MBA
Entrance**

 **Railways & Metro
Services**

...many more

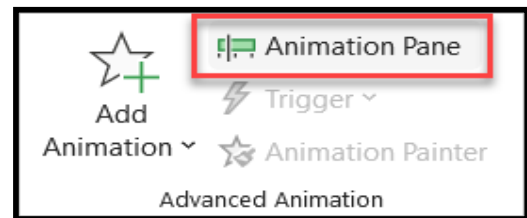
abhyasonline.in

Adding Advanced Animations on a Slide in Power Point

Animation Pane:

The **Animation Pane** in PowerPoint is a **toolbox** that lets you **see, manage, and control** all the animations you have added to objects (like text, pictures, shapes) on your slide. A tool in PowerPoint that lets you view, manage, and customize animation effects on your slides.

- It shows the sequence, timing, and duration of each animation for better control over presentation flow.



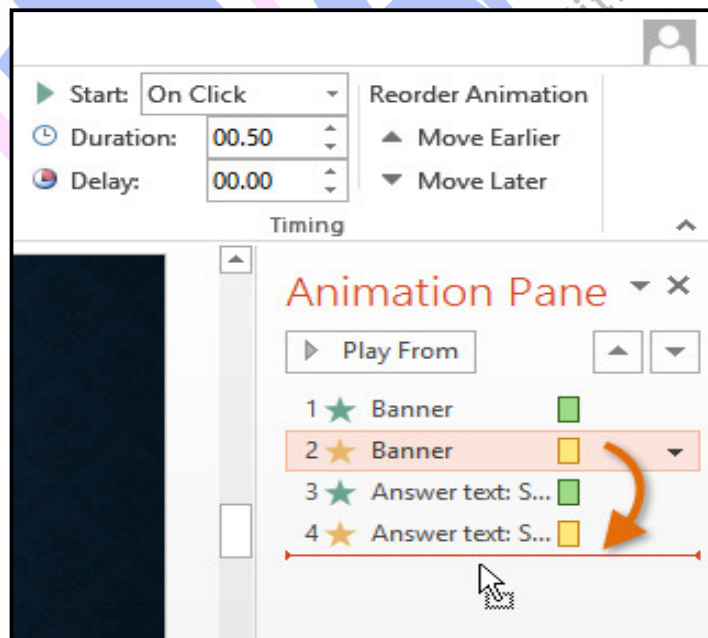
Why is the Animation Pane Useful?

- Shows which animations are applied.
- Lets you change the order of animations.
- You can edit timings (start time, duration, delay).
- Helps make your slide look professional and flow smoothly.

What You'll See in the Animation Pane:

A list of all animations added to the current slide. Each item shows:

- The object name (e.g., "Title 1", "Picture 3").
- The effect icon (like Fade, Fly In).
- A number showing the animation order.
- A timeline bar showing when each animation starts and how long it lasts.



Course
&
Test Series

Adding Advanced Animations on a Slide in Power Point

- CBSE
- ICSE
- NTSE
- Banking & Insurance
- Central Govt. Service
- State Govt. Services
- LAW Entrance
- MBA Entrance
- Railways & Metro Services
- ...many more

What You Can Do in the Animation Pane?

- Reorder Animations: Click and drag to move an animation up or down in the list.
- Change Timing: Right-click → choose Start With/After/On Click, set duration, or delay.
- Preview Animation: Press the Play button to preview all animations in order.
- Delete Animation: Right-click on an item → click Remove.
- Rename Object: Helps you identify items clearly (e.g., instead of “Rectangle 4”, name it “Title Box”).

Trigger:

A trigger is a special animation control that makes an effect play only when a specific object (like a shape, image, or button) is clicked—instead of following the usual animation sequence.

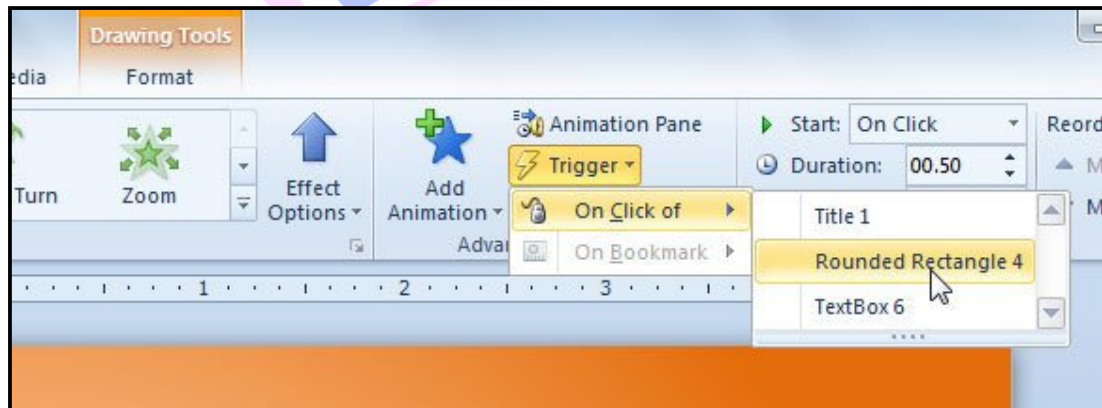
Think of a trigger as a remote control that makes something happen – but only when you press it.

Why Use Triggers?

- To make slides interactive
- To hide and reveal answers (like quizzes or flashcards)
- To control animations in any order you want
- To create games, clickable stories, or info popups

Example (Easy to Imagine):

You have a question on your slide: ➡ "What is the capital of France?"
You also have a shape or a button that says: "Show Answer"
Now, you want the answer "Paris" to appear only when you click that button, not automatically. ➡ This is where you use a Trigger!



Course
&
Test Series

 CBSE

 ICSE

 NTSE

 Banking & Insurance

 Central Govt. Service

 State Govt. Services

 LAW Entrance

 MBA Entrance

 Railways & Metro Services

...many more

abhyasonline.in

Adding Advanced Animations on a Slide in Power Point

How to Use Triggers (Step-by-Step):

Add an Animation:

- Select the object you want to animate (e.g., text "Paris")
- Go to Animations tab → Choose an effect (e.g., Fade In)

Open the Animation Pane:

- Go to Animations tab → Click Animation Pane

Set a Trigger:

- In the Animation Pane, right-click on the animation → Click "Timing..."
- Go to the "Triggers" tab
- Select Start effect on click of:
- Choose the object you want to click (e.g., "Show Answer" shape)

✓ Now, "Paris" will only appear when you click the "Show Answer" shape!

Trigger an animation effect to begin when you click it:

(Select the shape or object you want to add an animation to.)

1. Go to Animations > Advanced Animation > Add Animation and select the animation you want to add.
2. Next, go to Animations > Advanced Animation > Animation Pane.
3. In the Animation Pane, select the animated shape or other object that you want to trigger to play when you click it.
4. In the **Advanced Animation** group, click **Trigger**, point to **On Click of**, and then select the object.

Animation Painter:

Animation Painter is a tool in PowerPoint that lets you **copy animations** from one object and **paste them onto another** – just like the **Format Painter**, but for animations!

It saves time because you don't need to apply the same animation again and again manually.

Why Use Animation Painter?

- To save time when applying the same animation to many objects
- To make your slides look consistent
- To easily apply complex animation settings to other items

How to Use Animation Painter (Step-by-Step):

- Add an animation to your first object (like text, shape, or image).
- Click on the object with the animation.
- Go to the Animations tab on the ribbon.
- Click on Animation Painter (it looks like a small paintbrush).

Course & Test Series

CBSE

ICSE

NTSE

Banking & Insurance

Central Govt. Service

State Govt. Services

LAW Entrance

MBA Entrance

Railways & Metro Services

...many more

abhyasonline.in

Adding Advanced Animations on a Slide in Power Point

- Your cursor will change to a paintbrush 🖌️ .
- Click on another object that you want to apply the same animation to.

✅ Done! That object now has the exact same animation.

📧 If you want to apply it to more than one object, double-click the Animation Painter, then click on multiple objects. Press ESC to turn it off.

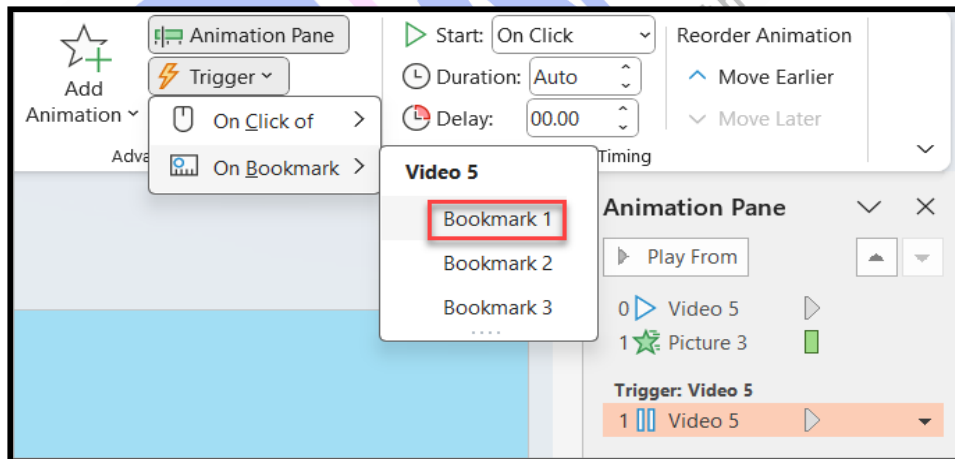
Example:

- You add a “Fly In” animation to a picture of biscuits.
- Now you want five other images to have the same animation.
- Use Animation Painter to copy and paste that effect instead of repeating the steps for each one.

Trigger an animation to begin during a video or audio clip

To trigger an animation effect to play during a video or audio clip, you must first insert a bookmark at the desired point in the clip.

1. Add a bookmark to your video or audio clip for where you want to trigger an animation effect to begin.
2. Go to **Animations > Advanced Animation > Animation Pane**.
3. In the Animation Pane, select the animation effect that you want to begin at a certain point during the audio or video clip
4. In the **Advanced Animation group**, click **Trigger**, point to **On Bookmark**, and select the bookmark that you want to trigger the animation to begin.



Course
&
Test Series

Adding Advanced Animations on a Slide in Power Point

Assignment

Creating an Interactive Quiz Using Triggers in PowerPoint

Instructions:

Create a New PowerPoint Presentation

1. Open PowerPoint and create a blank slide.

Slide 1: Quiz Question

- Add a title: "Quiz Time!"
- Add a question: "What is the capital of India?"
- Add four answer options as shapes or buttons:

- A. Mumbai
- B. Delhi
- C. Chennai
- D. Kolkata

Add Answer Feedback (Hidden at First):

- Add a text box or shape with the correct answer: "Correct! Delhi is the capital of India."
- Add another shape that says: "Try Again!"
- Keep these feedback shapes hidden by default (you can move them off-slide or make them invisible with no fill).

Add Animations:

Apply a "Fade In" animation to both feedback boxes.

Apply Triggers:

- Open the Animation Pane.
- Right-click on the feedback animation and choose Timing > Triggers.
- For the correct feedback, set trigger to "Start effect on click of: Option B (Delhi)".
- For incorrect feedback, set trigger to the other options (A, C, D).

Preview the Slide:

Use the Slide Show mode to test if the correct answer only appears when you click on "Delhi".



CBSE



ICSE



NTSE



Banking &
Insurance



Central Govt.
Service



State Govt.
Services



LAW
Entrance



MBA
Entrance



Railways & Metro
Services

...many more

abhyasonline.in

