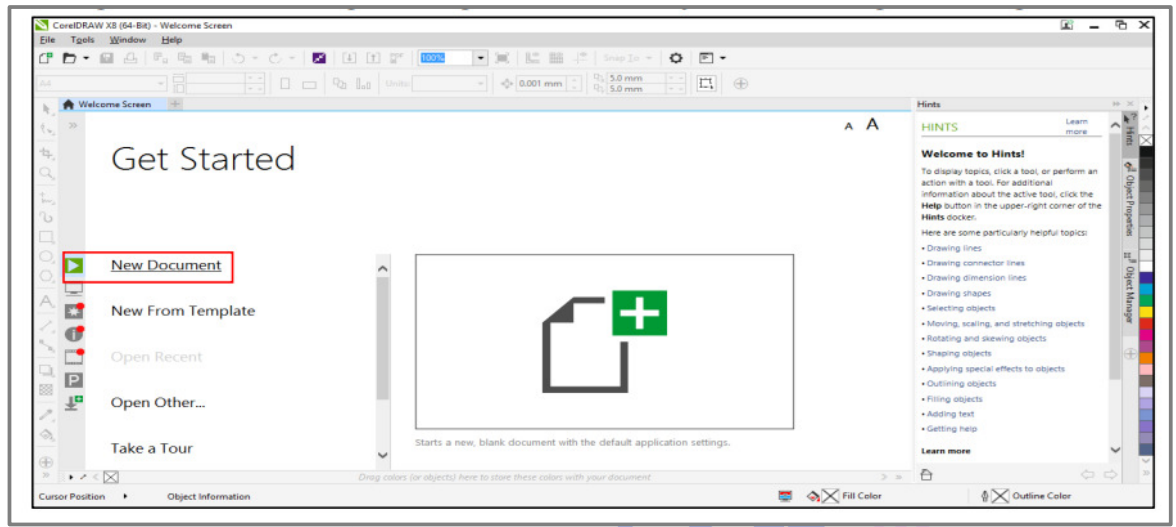


**Course
&
Test Series**

Introduction and User Interface of CorelDraw

Module 2 - Understanding and Exploring the CorelDRAW Interface

When you open CorelDRAW, you'll see a screen with different tools, menus, and space to draw.



Title Bar: A horizontal bar at the top of a window, bearing the name of the program and typically the name of the currently active document include three buttons minimize, maximize and close button. Or display the title of the open document.

Menu Bar: Corel customization features let you modify the menu bar and the menus it contains. You can change the order of menus and menu commands; add, remove, and rename menus and menu commands. You can search for a menu command if you do not remember the menu in which it belongs. You can also reset menus to the default setting. The customization options apply to the menu bar menus as well as to shortcut menus that you access by right-clicking.

Tool Box: The toolbox contains tools for drawing and editing images. Some of the tools are visible by default, while others are grouped in flyouts. **Flyouts** open to display a set of related CorelDraw tools. A small flyout arrow in the lower-right corner of a toolbox button indicates a flyout. You can access the tools in a flyout by clicking the flyout arrow.

-  **CBSE**
-  **ICSE**
-  **NTSE**
-  **Banking & Insurance**
-  **Central Govt. Service**
-  **State Govt. Services**
-  **LAW Entrance**
-  **MBA Entrance**
-  **Railways & Metro Services**
- ...many more**
- abhyasonline.in**

Course
&
Test Series

 CBSE

 ICSE

 NTSE

 Banking & Insurance

 Central Govt. Service

 State Govt. Services

 LAW Entrance

 MBA Entrance

 Railways & Metro Services

...many more

abhyasonline.in

Introduction and User Interface of CorelDraw

- After you open a flyout, you can easily scan the contents of other flyouts by hovering over any of the toolbox buttons which have flyout arrows.
- Flyouts function like toolbars when you drag them away from the toolbox. This lets you view all the related tools while you work.

Document Tab: A tab displays for each open document to allow you to quickly move between documents.

Update Text Toolbar: A temporary toolbar that allows you to update documents created in CorelDraw X7 (or earlier) in order to edit the text.

Drawing Window: The area outside the drawing page bordered by the scroll bars and application controls.

Property Bar: A detachable bar with commands that relate to the active tool or object. For example, when the text tool is active, the text property bar displays commands that create and edit text.

Docker: A window containing available commands and settings relevant to a specific tool or task.

Rulers: Horizontal and vertical borders that are used to determine the size and position of objects in a drawing.

Document Palette: A dockable bar that contains color swatches for the current document.

Document Navigator: The area at the bottom left of the application window that contains controls for moving between pages and adding pages.

Drawing Page: The rectangular area inside the drawing window. It is the printable area of your work area.

Status Bar: An area at the bottom of the application window that contains information about object properties such as type, size, color, fill, and resolution. The status bar also shows the current cursor position.

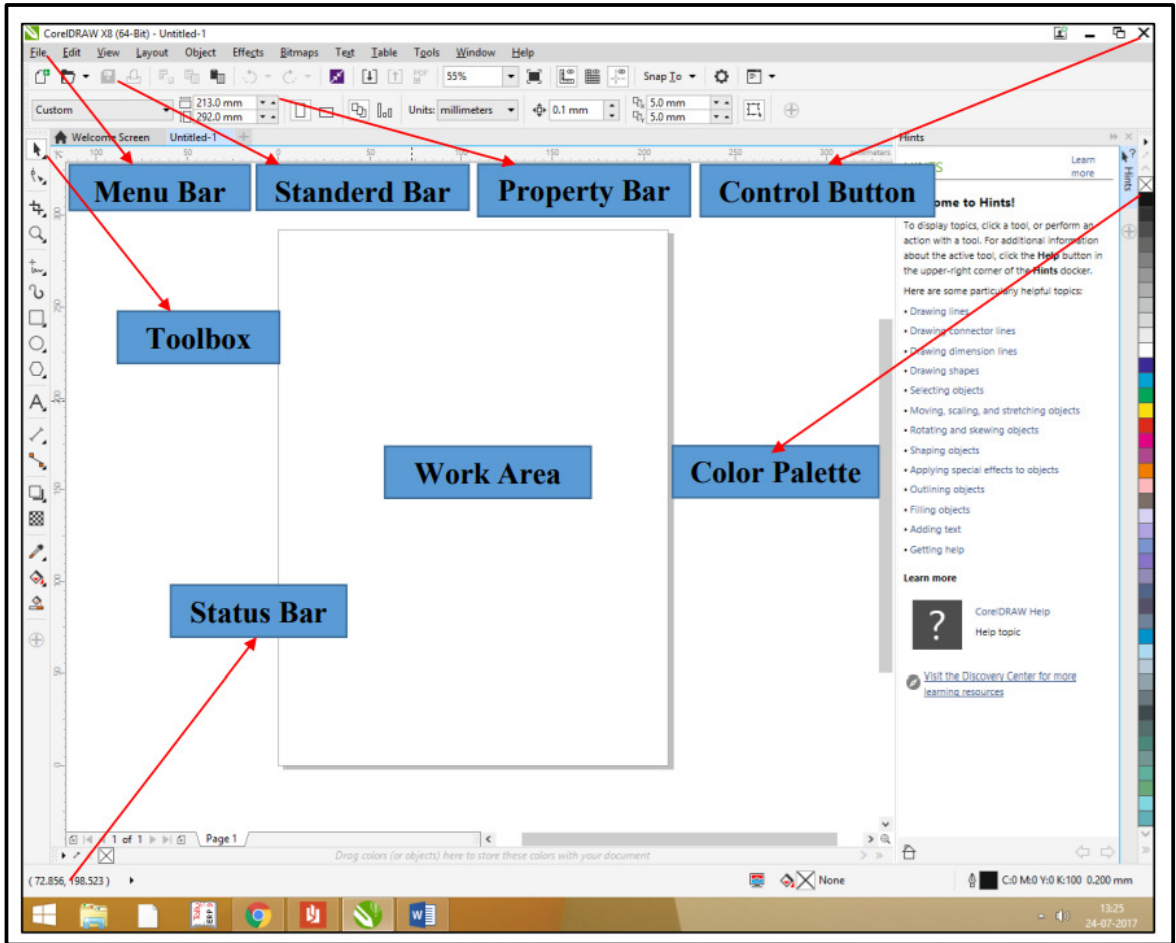
Navigator: A button at the lower-right corner that opens a smaller display to help you move around a drawing. Color Palette. A dockable bar that contains color swatches.

Introduction and User Interface of CorelDraw

Course & Test Series

-  **CBSE**
-  **ICSE**
-  **NTSE**
-  **Banking & Insurance**
-  **Central Govt. Service**
-  **State Govt. Services**
-  **LAW Entrance**
-  **MBA Entrance**
-  **Railways & Metro Services**

...many more
abhyasonline.in



Assignment

1. What is the primary function of the Property Bar in CorelDRAW X7?
 - A) It holds tools for drawing shapes
 - B) It displays permanent menus
 - C) It shows options based on the selected tool or object
 - D) It allows adding new pages

2. Which of the following elements allows quick switching between multiple open documents in CorelDRAW?
 - A) Docker
 - B) Document Tab
 - C) Toolbox
 - D) Status Bar

Course
&
Test Series

Introduction and User Interface of CorelDraw



CBSE



ICSE



NTSE



Banking &
Insurance



Central Govt.
Service



State Govt.
Services



LAW
Entrance



MBA
Entrance



Railways & Metro
Services

...many more

abhyasonline.in

3. How can you access additional tools that are grouped in a flyout in the Toolbox?

- A) Right-click on the Property Bar
- B) Click the flyout arrow on the tool icon
- C) Double-click the drawing page
- D) Use the scroll bar on the toolbox

4. What is the purpose of the Docker in CorelDRAW?

- A) To save files directly
- B) To manage printing settings only
- C) To provide tool-specific options and controls
- D) To switch between color modes

5. Which interface component helps you measure and position objects precisely within the drawing area?

- A) Navigator
- B) Gridlines
- C) Rulers
- D) Property Bar

6. Where is the Document Navigator located, and what does it do?

- A) Top-right; used for editing the title
- B) Bottom-left; used for moving between pages
- C) Center of screen; manages file saves
- D) Bottom-right; adjusts zoom level

7. In CorelDRAW X7, what does the Update Text Toolbar appear for?

- A) To change document colors
- B) To update text from older versions of CorelDRAW
- C) To convert text into artistic curves
- D) To align paragraph formatting

