

Ans 1 Their voice become deeper at the onset of puberty

Ans 2 Puberty begins at the age of 11 and lasts till 18-19

Ans 3 All Endocrine glands of body constitute endocrine system.

Ans 4 When an adolescence reaches reproductive maturity. Puberty ends.

Puberty	Adolescence
Puberty is the in which a child's sexual and physical characteristics mature	Adolescence is the period between puberty and adulthood

Ans 6 Master gland ————— & Pituitary gland  
 stress hormone of body ————— s. Adrenaline  
 Disease resistance hormone in child ————— p. Thymus  
 Deficiency of govt iodine cause ————— s. Croitre

Ans 7.1 Height increases

2 Hair grow on body

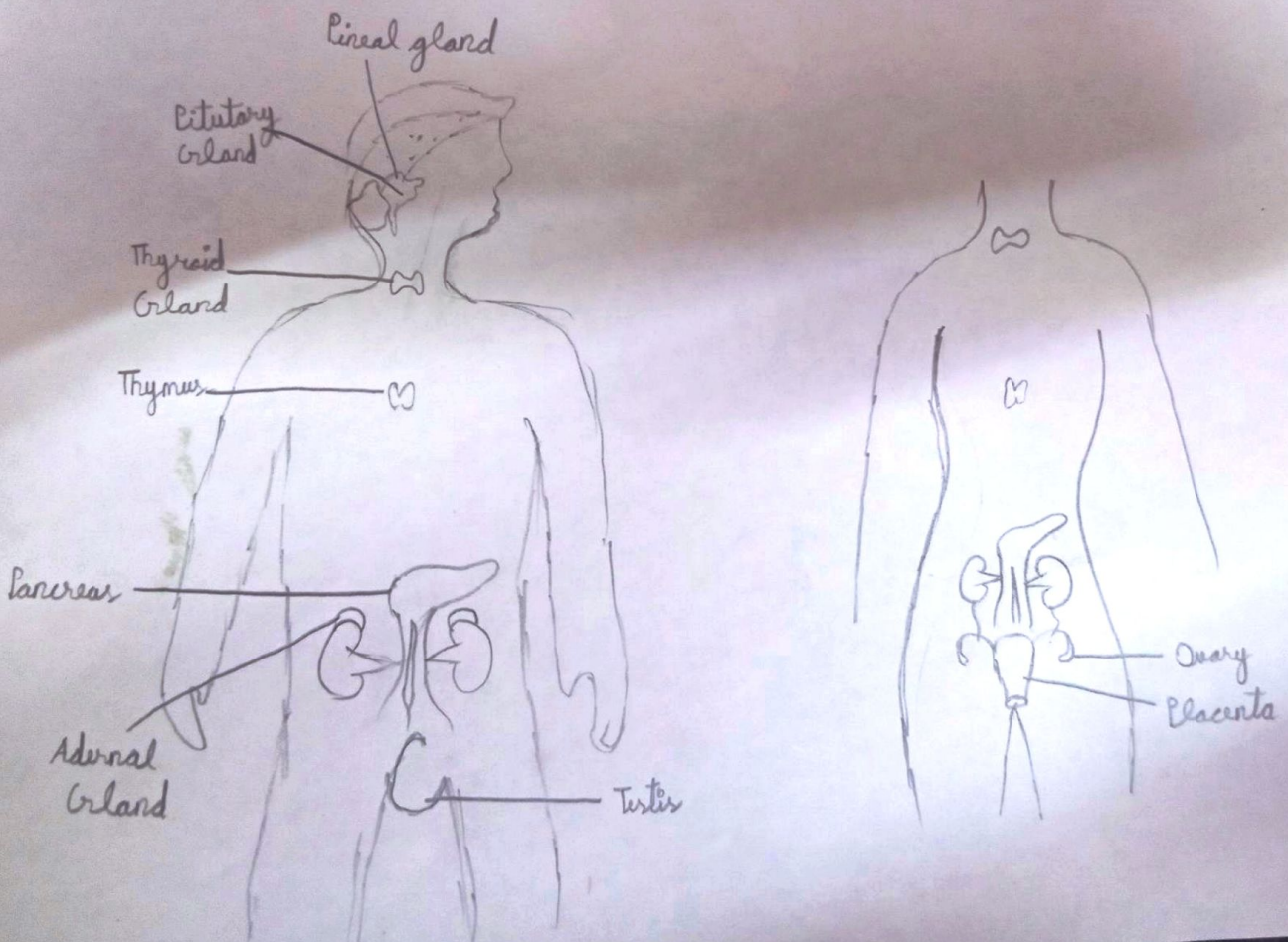
3 Voice changes

Ans 8 It negatively influences children's right to education, health and protection. The reproductive system of girls in such a age is not ready to give a birth to child.

Ans 9 As in humans Hormones also play a major role in completing life cycle of insects and frog. Like Thyroxine helps a tadpole to become a frog.

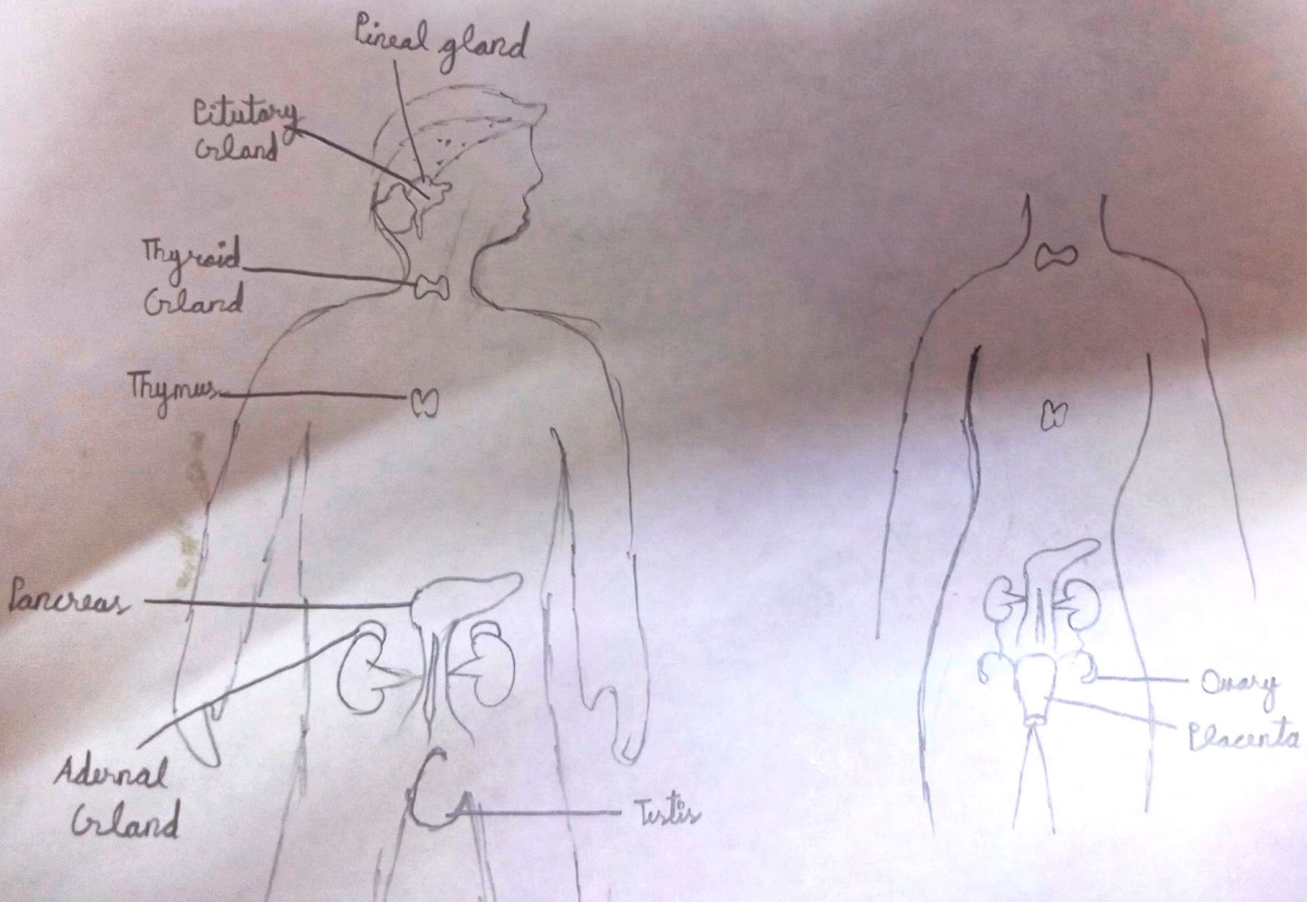
# Endocrine System

Ans 10



Ans 12

# Endocrine System



- Ans 12 (1) Pituitary gland is <sup>also</sup> known as master gland. It control the functioning of other endocrine gland.
- 2 Pineal gland is found middle of brain. It is important for sleep awake cycle.
- 3 Thyroid gland is located front of our neck. It is very important for metabolism.
- 4 Thymus is active until puberty and produces hormone for the development of T cell.
- 5 Adrenal glands can be found on top of each kidney. These glands produce hormones important for regulating functions.
- 6 Pancreas is located behind stomach. Its endocrine function involves controlling blood sugar levels.
- 7 Testis helps in making sperm. And produce testosterone which helps in growth of body hair.
- 8 Ovary is the place where female reproductive cells are made.