

8/10/22

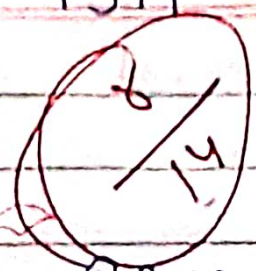
Name - Sanjana
Course - DC AA
Roll. No - 1399

Ph. no - 9306110416
father's name - Mr. Vijay Kumar

Date: / /

class teacher -> Monika Mam.

Ans-1



Basis

RAM

ROM

full form

~~Random~~ It refers to Random Access memory.

It refers to Read only memory

meaning

Ram is a form of computer memory that can be read and changed in any order.

ROM is a type of non-volatile memory used in computers and other electronic devices.



not attempt in op. fail

Ans-2

features of SRAM

★

SRAM is faster than DRAM which means it is faster in operations.

more elaboration
required

(1/2)

* SRAM can be used to create a speed-sensitive cache.

* SRAM only has medium power consumption.

Ans-3

Types of memory

(1/3)

working memory

Short-term memory

long term memory

Not attempted in detail

Working memory and short term memory is used for

temporary storage of the data

whereas long term memory allow users to keep data

for long - run period.

Ans-4

needed more explanation

Basis	Primary memory	Secondary memory
Expensive	Primary memory is more expensive than secondary storage devices.	Secondary memory or storage devices are less expensive than primary storage devices.
Main memory	Primary memory is the main memory of Hard disk, RAM. only	Secondary memory can be external devices like CD, floppy magnetic discs etc.

accessed by the CPU	Primary memory is accessed directly by the CPU and it is the main memory of the computer.	Secondary memory cannot be directly accessed by the CPU and it is the external storage memory.
---------------------	---	--

Ques

features of Computer memory

- Computer memory helps to store the data in the computer.
- The Data can be ~~exp~~ stored externally or internally.
- Computer memory *more elaboration required.*