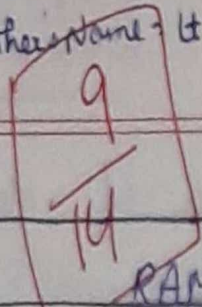


15 Oct 2022



Diksha
for All Concepts Clear

1. Ans

	RAM	ROM
(i)	RAM stands for Random Access Memory.	ROM stands for Read Only Memory.
(ii)	User can write & read in this memory.	User can only read this memory.
(iii)	This is Primary memory.	This is secondary memory.

2

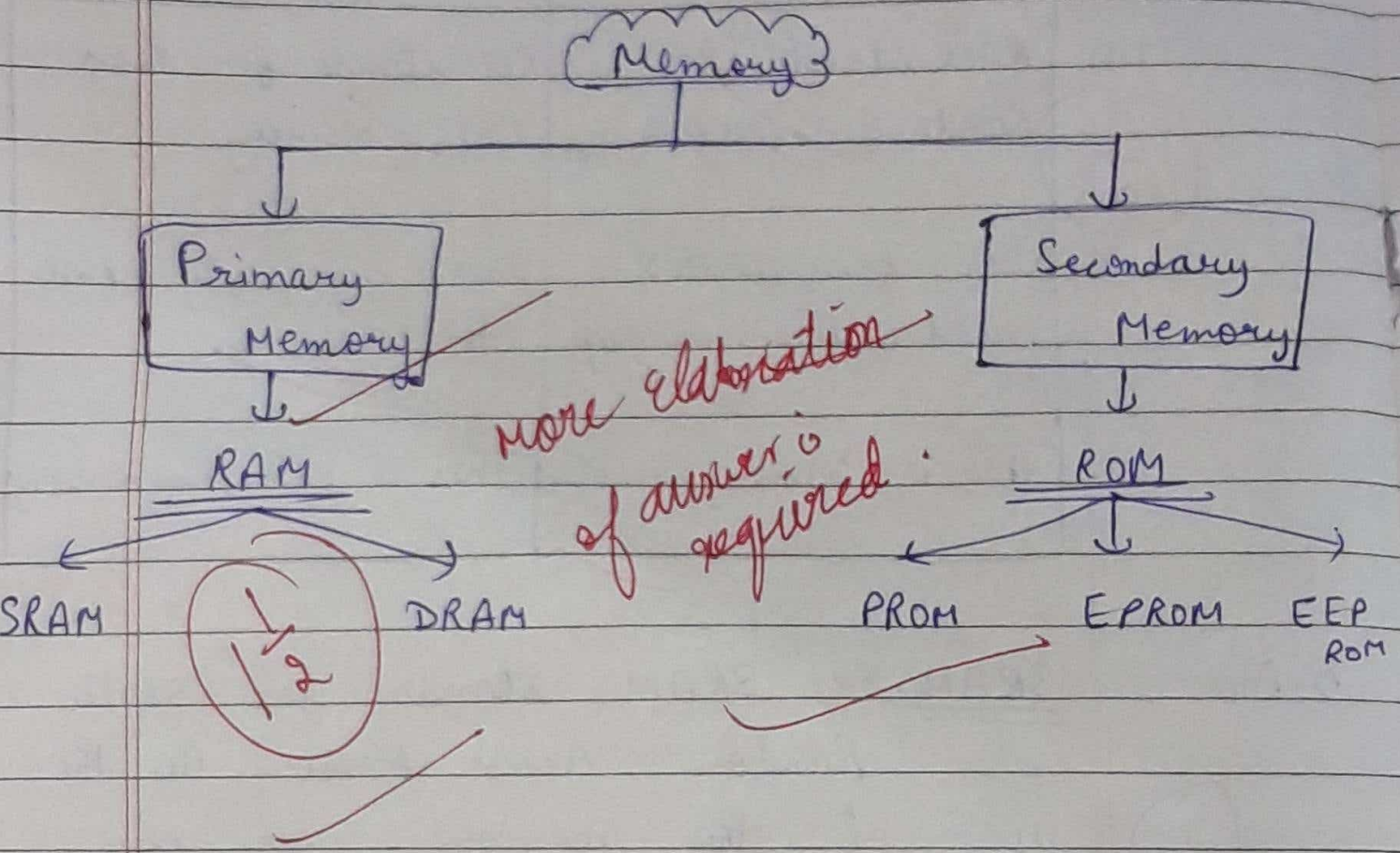
2. Ans

SRAM :- SRAM stands for static Random Access Memory. By the

use of this memory user can solve & stored arithmetic problems. It is also useful for stored in computer.

→ Answer needs more clarification

3. Ans Their are two types of Memories :->



more elaboration
of answer as required

4. Ans

Primary Memory

Secondary Memory

- | | | | |
|-------|--|-------|---|
| (i) | The memory using in the processing, its known as Primary Memory. | (ii) | The memory using in the giving output, its known as secondary memory. |
| (ii) | Primary Memory includes RAM. | (ii) | Secondary Memory includes ROM. |
| (iii) | We can read & write this memory. | (iii) | We only can read this memory. |

Answer needs
more clarification

5. Ans (i) For future use \Rightarrow User can use the memory for future use. We stored information by memory.

(ii) For solving problems \Rightarrow By using memory user can solve problems.

(iii) Read & write \Rightarrow By using memory user can read & write the data & information.